

## **Windows Task-Lock, Version 3.0, 1996**

Windows Task-Lock provides a simple and inexpensive, but effective way to password protect specified applications no matter how they are executed. It is easy to configure and requires little to no modifications to your current system configuration. Administrator password is enabled for site licenses.

Registration

Installation

Task Definition (Main Dialog, sglset.exe)

Passwords

Protection Dialog

Special Steps for Protecting the MS-DOS Prompt

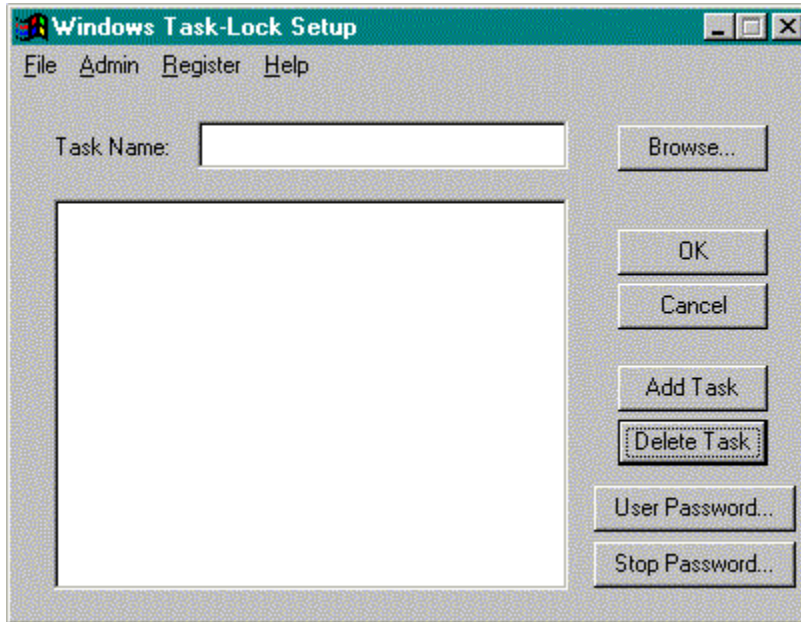
IMPORTANT: To Insure Proper Security

## Installation

Copy the files `sgllock.exe`, `sgllock.hlp`, and `sglset.exe` to the Windows directory (`c:\windows`, `c:\winnt`, etc.). Place the protection program, sgllock.exe, in your startup group so that it is executed whenever your 32-bit version of Windows (Windows 95 or NT) starts up. When `sgllock.exe` starts, it will flash on the screen once to let you know it is running. Use the setup program, sglset.exe, to define your passwords and the tasks to protect. Use the Browse button to see the currently running tasks on your system. Once these steps are complete, reboot and you are ready.

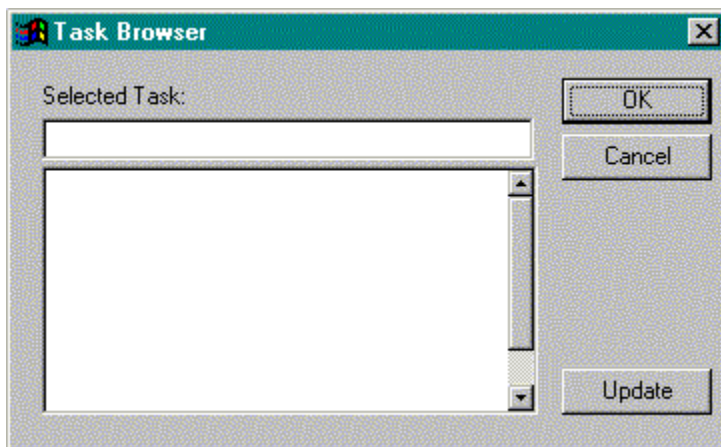
System Requirements: Windows 95 or Windows NT.

## Task Definition (Main Dialog, sglset.exe)



**Task Name:** Enter the name of the task you wish to protect in this field. The task name is usually the same as the text displayed as the window title. You do not have to enter the whole title. The comparison will be done only on the portion you enter. For example, if you enter *Notepad* as the title the protection software will protect *Notepad - (Untitled)*, *Notepad - mytext.txt*, etc. To select from a list of the currently running tasks use the **Browse** button. To add the task name to the **Protected Tasks** list press the **Add Task** button. If you have problems determining a task name see the [IMPORTANT: To Insure Proper Security](#) section.

**Browse:** This button displays the **Task Browser** dialog.



Simply select the task you wish to protect from the list box. The task name will appear in the **Selected Task** field. You may return this name as selected to the **Task Definition** dialog or edit

it. If some new tasks have started you may select **Update** to refresh the list box. As always **OK** dismisses the dialog accepting the selected task and **Cancel** simply dismisses the dialog.

**Add Task:** Press this button to add the task name currently displayed in the **Task Name** field to the **Protected Tasks** list.

**Delete Task:** Press this button to delete the task selected in the **Protected Tasks** list.

**Protected Tasks:** This list displays the currently protected tasks. To add a task, type the task name in the **Task Name** field and press the **Add Task** button. To delete a task, select the desired task and press the **Delete Task** button.

**User Password:** This button will display the User Password dialog. You may enter a user password if one has not been defined or change the current user password. The user password is used to give users access to protected tasks.

**Stop Password:** This button will display the Stop Password dialog. You may enter a stop password if one has not been defined or change the current stop password. The stop password is used to terminate the execution of the Protection Dialog software.

**OK:** This button saves the current settings and dismisses the dialog. If the protection software, sgllock.exe, is currently running the changes made will take affect in approximately a minute. If the tasks you wish to protect are running at the time the changes are made, you will have to close these tasks for the Protection Dialog software to correctly recognize them.

**Cancel:** This dismisses the dialog without saving the changes.

#### **Dialog Menu:**

##### **File**

**Close:** Dismisses the dialog (the same as Cancel)

##### **Admin**

**Set Admin Password...** This brings up the Admin Password dialog.

##### **Register**

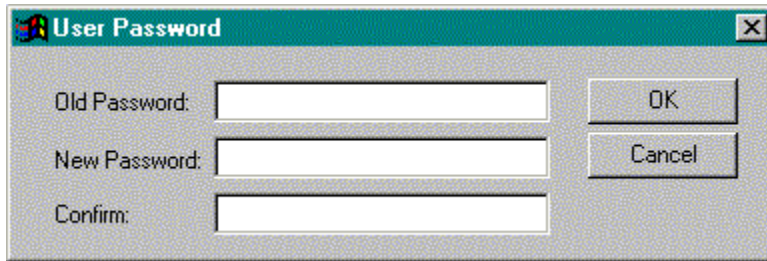
**Register...:** Displays the Registration dialog.

##### **Help**

**Help...:** Displays this help file.

**About Windows Task-Lock...:** Displays the About dialog.

## Passwords



The **User Password** and the **Stop Password** dialog function in the same manner. The **User Password** dialog defines or changes the password that allows users access to protected tasks and the **Stop Password** dialog defines or changes the password that halts the execution of the Protection software. Both a **User Password** and a **Stop Password** must be defined.

**Old Password:** This field accepts the current password, if one exists, prior to a change.

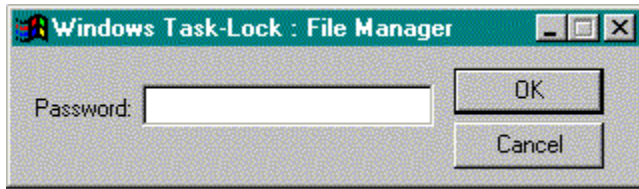
**New Password:** This field accepts the new or changed password.

**Confirm:** This field accepts the new password again as a confirmation that it was typed correctly.

**OK:** This button saves the changes and dismisses the dialog.

**Cancel:** This button dismisses the dialog and does not save the changes.

## Protection Dialog (sgllock.exe)



When a task defined in the Protected Tasks list is executed the Protection Dialog will appear, assuming sgllock.exe is running, and restrict the cursor to the dialog. The user then has 3 attempts to enter the correct password or the protected task will be terminated. The title of this dialog will contain the window title of the task being protected. If the window title of the protected task is too long then it will be truncated to fit on the dialog. The graphic shows an example where File Manager is protected. This truncation will not affect the underlying operation of the software.

**Password:** This field accepts the User Password defined using the Password dialog of the Task Protection software (sglset.exe).

**OK:** This button accepts the password.

**Cancel:** This button terminates the task being protected and dismisses the Protection Dialog.

**IMPORTANT: To Insure Proper Security**

- Password protect the setup program by defining the first task as the name displayed in the title of the Task Definition dialog.

- If you have a system with highly sensitive data and/or that is prone to be tampered with by hackers, then Windows Task-Lock should only be part of the security measures you take. To protect against tampering through system reboots, a BIOS password or similar boot password utility should be utilized. To protect against a safe-mode reboot without a reboot password here is an alternative.

1) Windows 95 creates a hidden, read-only system file named MSDOS.SYS in the root of the computers boot drive (usually c:). Change the properties on this file and edit it to change or add the following in the [OPTIONS] section to increase security. These values are Boolean with a value of 1 (enabled) or 0 (disabled).

**BootGUI=0** : This will disable automatic graphical startup into Windows 95.

**BootKeys=0** : This will prevent any startup keys (F5, F6, and F8) from functioning.

**BootFailSafe=0** : This will disable Safe Mode for system startup.

This will prevent a safe-mode reboot. **DISABLED SAFE-MODE WARNING:** Make sure you have a reboot floppy available in case you need to correct any problems that may be encountered in the future. Disabling safe-mode will make this necessary to get around the startup files.

2) Add the following to the bottom of you autoexec.bat file

```
win c:\windows\sgllock.exe
```

This will execute sgllock.exe as soon as Windows comes up without sgllock.exe being in your startup group. This can be used independent of step #1 if you wish sgllock.exe to be executed at Windows start without placing it in your startup group.

This assumes that you placed sgllock.exe in c:\windows. Simply change the path to where you placed sgllock.exe and you're set. Only one of these lines can exist in your autoexec.bat.

- Place the protection program in your startup group so that it executes as soon as Windows starts.

- Prevent a user from tampering with the startup profile or program files by protecting File Manager, Explorer, MS-DOS windows, and the Taskbar Properties dialog. The Taskbar Properties can be added by simply typing in Taskbar Properties into the Task Name field and selecting Add Task.

**- Do not run more than one instance of the protection software (sgllock.exe). This may cause difficulty in entering passwords.**

- A task name is usually the text displayed as the title of the main window of a program. Sometimes it is not. In these rare cases the Browse feature can help determine the task name of the program you wish to protect. The Task Browser dialog will display the task names of the active tasks at the time it is displayed is run. The task list it displays will not update automatically but can be updated by selecting the Update button.

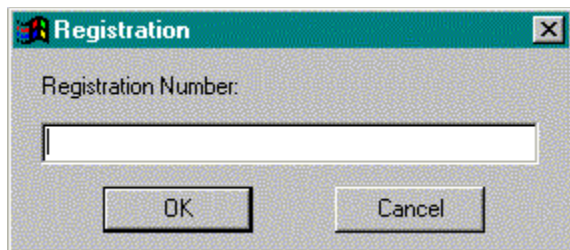
- It is best to setup the tasks you wish to protect and then start or restart the protection software (sgllock.exe) to insure that all desired tasks are properly protected.

- For additional security try WorkStation Lock. This program allows you to lock your system on demand until the correct password is given. WorkStation Lock, wrk1ckxx.zip (where xx is the version number) can be found on the major online services and the WWW.



## Registration

If you use an unregistered **Windows Task-Lock** you will notice that every time you accept a password on the Protection Dialog, a box appears indicating you are unregistered and it displays the password you entered using the Windows Task-Lock Setup Dialog. When you send in your registration, I will return you a registration number that you will enter on the registration dialog of the Windows Task-Lock Setup Dialog. This dialog can be reached from the menu of the Windows Task-Lock Setup Dialog. This will register the software and you will no longer get the annoying box that displays your password.



**Windows Task-Lock** is Shareware (see the Legal Stuff below). If you feel that this software will be useful to you please send \$5 (US dollars or equivalent non-US denomination based on current exchange rates) for individual license or \$30 for site license (up to 30 copies, greater than 30 copies on a case by case basis) to the following address:

Stephen A Jernigan  
PO Box 21015  
Huntsville, AL 35824  
USA

If you are writing a check please make it out to: Stephen A Jernigan

The following information must be sent along with your registration fee to insure prompt registration.

Email address (or postal if no email)  
Product name  
Product version number  
If a site license, number of copies to be used

Please provide the name of the software you are registering, the version of the software, and your email address (or if you don't have one, your postal address) so you can be correctly registered. An email address will provide both of us with quicker and easier registration.

Please report any bugs, suggestions for improvement or new features you would like to see. I can be reached through email at [103672.2634@compuserve.com](mailto:103672.2634@compuserve.com)

- Version 1.0

- Initial Release
- Version 1.1
  - Changed protection dialog title to contain the window title of the task being protected
  - Corrected a bug in the timing for a read of an updated setup by the protection dialog software
- Version 1.2
  - Corrected a bug in the focus of the protection dialog (sgllock.exe)
- Version 1.3
  - Corrected a bug that caused erratic behavior in the protection dialog software on Windows 95
- Version 2.0
  - Corrects a bug that will allow CNTRL+ALT+DEL to terminate the protection dialog
  - Provides a task name browser for setup and error dialogs for the protection dialog.
- Version 2.1
  - Corrects a bug that allows ESC to terminate the program
- Version 2.2
  - Added a Cancel button to the protection dialog and improved security and usability thanks to users input.
- Version 3.0
  - Administrator password addition for site administration, added a menu on setup and corrected bug in the error dialog.

## **LEGAL STUFF:**

### DEFINITION OF SHAREWARE

Shareware distribution gives users a chance to try software before buying it. If you try a Shareware program and continue using it, you are expected to register. Individual programs differ on details -- some request registration while others require it, some specify a maximum

trial period. With registration, you get anything from the simple right to continue using the software to an updated program with printed manual.

Copyright laws apply to both Shareware and commercial software, and the copyright holder retains all rights, with a few specific exceptions as stated below. Shareware authors are accomplished programmers, just like commercial authors, and the programs are of comparable quality. (In both cases, there are good programs and bad ones!) The main difference is in the method of distribution. The author specifically grants the right to copy and distribute the software, either to all and sundry or to a specific group. For example, some authors require written permission before a commercial disk vendor may copy their Shareware.

Shareware is a distribution method, not a type of software. You should find software that suits your needs and pocketbook, whether it's commercial or Shareware. The Shareware system makes fitting your needs easier, because you can try before you buy. And because the overhead is low, prices are low also. Shareware has the ultimate money-back guarantee -- if you don't use the product, you don't pay for it.

#### DISCLAIMER - AGREEMENT

Users of Windows Task-Lock must accept this disclaimer of warranty: "Windows Task-Lock is supplied as is. The author disclaims all warranties, expressed or implied, including, without limitation, the warranties of merchantability and of fitness for any purpose. The author assumes no liability for damages, direct or consequential, which may result from the use of Windows Task-Lock."

Windows Task-Lock is a "shareware program" and is provided at no charge to the user for evaluation. Feel free to share it with your friends, but please do not give it away altered or as part of another system. The essence of "user-supported" software is to provide personal computer users with quality software without high prices, and yet to provide incentive for programmers to continue to develop new products. If you find this program useful, you must make a registration payment of \$5 to Stephen A Jernigan. The \$5 registration fee will license one copy for use on any one computer at any one time. You must treat this software just like a book. An example is that this software may be used by any number of people and may be freely moved from one computer location to another, so long as there is no possibility of it being used at one location while it's being used at another. Just as a book cannot be read by two different persons at the same time.

Commercial users of Windows Task-Lock must register and pay for their copies of Windows Task-Lock as a site-license. A site-license is granted for a single site such as a school, library, or small business that will utilize up to 30 copies of Windows Task-Lock for a fee of \$30. Registration for sites requiring greater than 30 copies will be handled on a case by case basis.

Anyone distributing Windows Task-Lock for any kind of remuneration must first contact Stephen A Jernigan at the address given for authorization.

You are encouraged to pass a copy of Windows Task-Lock along to your friends for evaluation.

Please encourage them to register their copy if they find that they can use it. All registered users will receive a registration number to fully enable the latest version of the Windows Task-Lock software.

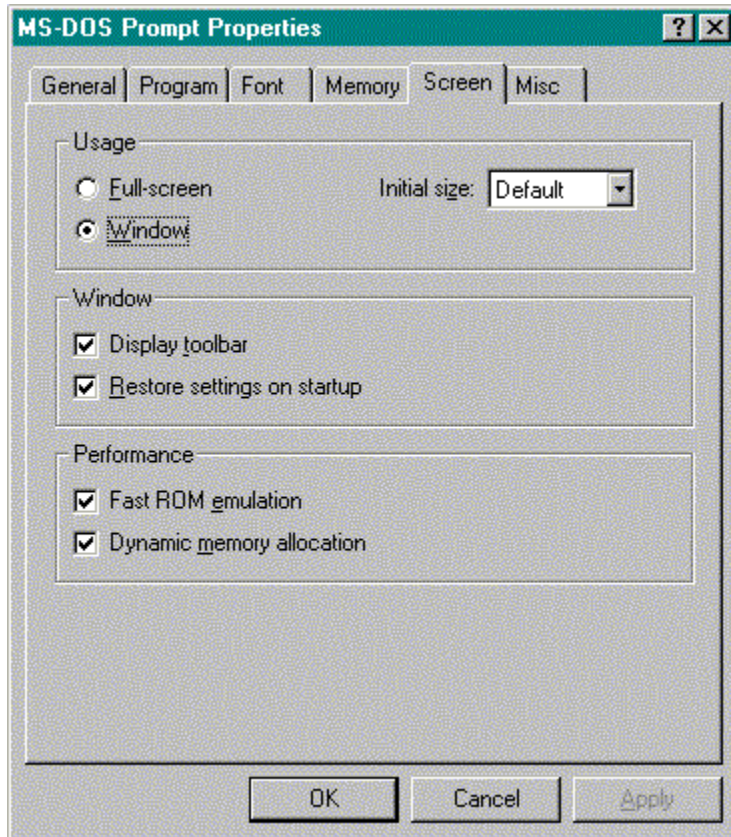
This software may be freely distributed as long as the following files are all kept together and unmodified and no remuneration is received by the person or persons distributing said software.

sglset.exe  
sgllock.hlp  
sgllock.exe  
readme.txt

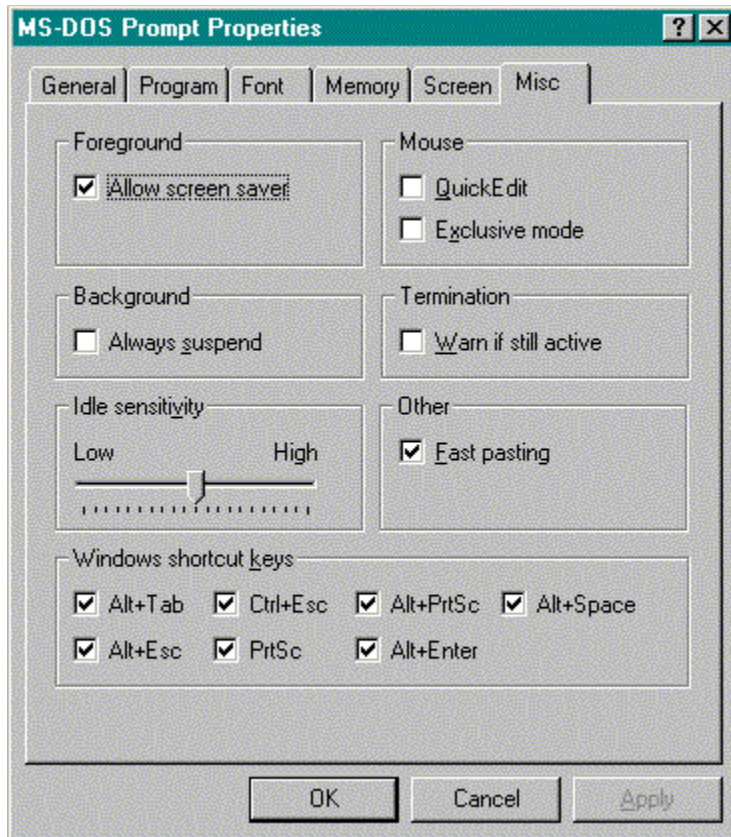
Copyright (c) 1996 *Stephen A Jernigan*

## Special Steps for Protecting the MS-DOS Prompt

To properly protect the MS-DOS Prompt, the Properties must be set a certain way. Bring up the Properties dialog and select the Screen tab. When the tab appears, select the Window radio button in the Usage section. This insures that the MS-DOS Prompt will appear as a Window. This is required for the Windows Task-Lock to work properly.

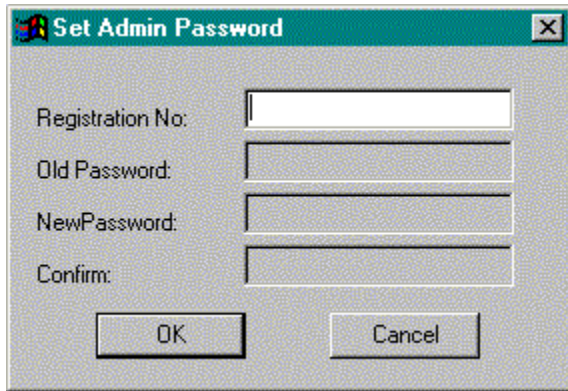


Next, select the Misc tab. Make sure the check box in the Termination section is NOT checked. This insures a clean closure of the MS-DOS Prompt window.



After this is done, add the MS-DOS Prompt Properties dialog as a task to be protected.

## Set Administrator Password



The image shows a Windows-style dialog box titled "Set Admin Password". It has a standard title bar with a close button (X) in the top right corner. The dialog contains four text input fields, each with a label to its left: "Registration No.", "Old Password", "NewPassword", and "Confirm". Below the input fields are two buttons: "OK" on the left and "Cancel" on the right. The dialog box has a light gray background and a thin border.

The Task-Lock Admin Password dialog defines or changes the password that allows an administrator to dismiss the protection dialog that locks the system. This feature is only available when a site license has been registered. It is not active for a single system registration.

**Registration No.:** This field accepts the registration number. This is required so that only the administrator can set or change the administrator password. Each user will still be able to operate Windows Task-Lock as before with the password set on the User Password dialog.

**Old Password:** This field accepts the current administrator password, if one exists, prior to a change.

**New Password:** This field accepts the new or changed administrator password.

**Confirm:** This field accepts the new administrator password again as a confirmation that it was typed correctly.

**OK:** This button saves the changes and dismisses the dialog.

**Cancel:** This button dismisses the dialog and does not save the changes.

